

Construction you can count on.

Contents

INTRODUCTION

About Us	1
Business Segments & Operations	2
Project Managements	5
Project Quality Plan	10
Safety Environment Policy	13
Health & Safety Policy	15
Tools & Equipments	25
Work Gallery	32
Running Projects	34
Organization Chart	40
Trade License	42
Sister Concerns	45

Introduction



SKR Building Contracting LLC is the brainchild of CEO MR. Shahnawaz Rizvi Khan having Bachelors of Engineering degree in Civil and 21 years of vast experience in the construction industry including 10 year of management experience. He established a steel company name Gulf steel LLC located in UMM AL QUWAIN in UAE in association with Thamer Holding and ran the company from January 2007 to December 2011 then he had been asked by management of Thamer Holding to take responsibility of their construction company named Becon Construction based in Ajman, Sharjah and Dubai. The responsibility of reviving the sick construction company was a big challenge for him but he graciously accepted the charge of company in January 2012 with 3 sick projects worth of AED 40,000,000 and 150 employees and left the company in February 2017, when the company was having more than 25 project worth of 1.5 billion and 2,000 employees.

He is having passion for construction so established his own company in year 2014 in Ajman by name of star square building Contracting LLC, with unlimited license. As of now SSBC is having 3 towers (G+4p+25 Typ+HC+R) in Emirates City Ajman and more than 100 employees. To expand his business in other emirates. He chose Dubai and established a company named SKR Building Contracting in march 2017 and set the target to make SKR different from other construction company by focusing his tested mantra of considering everyone (Clients, Consultants, Employees, Sub Contractor, Supplier) as one family.

About us.

SKR BUILDING CONTRACTING LLC is dynamically engaged in the field of Building and construction. We are having experience of executing several projects such as Residential & Commercial Multi Storey Building, Towers, Mosques, Villas, Showrooms, Warehouses, Sheds, and other construction buildings.

We ensure the reliability and accountability in the trust of our clients, which reveal the huge journey throughout our project completion. From the day one of initiating the project till the end of satisfaction of our clients, we make sure of firm commitment to our clients. Quality reliability required to execute any project you may consider us for.

A team of experts is always available to implement and entire any projects at a given time. We have assured quality team to perform quality work, by increasing manpower. We have embarked the vast resources to supplement the criteria and demands of our clients.

We have the team full of experience, the resources and the quality reliability required to execute any project you may consider us for.

Our Vision

Our vision is to be the most professional contracting company in the region, providing turnkey solutions in Steel Building and Pre-Cast Concrete Buildings using the latest available technology

Our Mission

Our mission is to provide best quality services accompanied with financial statement management and timely achievement of work. We struggle to believe our client visions and do our finest to fulfill their obligations for the project. Moreover, we have a strong aspiration to achieve this with the co-operation and co-ordination of our well experienced team on the executing and timely completion of the project.



Business Segments & Operations

Business Segments & Operations



RESIDENTIAL PROJECTS

SKR has been building and renovating homes in Dubai since 2017. We employ a group of highly skilled tradesmen who take pride in their workmanship. Our management staff assist these tradesmen by liaising with our clients and designers and by coordinating suppliers and sub-trades to ensure a smooth and successful build. We are well known for the construction of many notable architectural homes around the region but we also have a team dedicated carrying out smaller alterations, additions and landscape projects.

COMMERCIAL PROJECTS

SKR is active in all sectors of the construction market, but most visibly in commercial construction. We build the schools our children learn in, the offices we work in and the restaurants we eat at. We build the hotels we stay in, the sporting facilities we play in and the supermarkets we shop at. We build libraries, galleries and hospitals. We really do do it all. We do it efficiently and economically and we don't compromise safety, quality or timelines.



INDUSTRIAL PROJECTS

Our experience in industry covers a wide spectrum and includes the construction of food processing facilities, storage facilities, manufacturing facilities, distribution facilities, engineering workshops and buildings for use in the energy sector. We have an appreciation of the risks, requirements and protocols when working in and around existing operational facilities and we have the skills and systems to manage this work professionally.

Business Segments & Operations

Design

- ◆ Design & Planning Projects / Plants.
- ◆ Detailed Design of Process, mechanical & Electrical Components.
- ◆ Civil guide, layout and general arrangement drawing.

Engineering

- ◆ Determination of all key components.
- ◆ Technical Specification.
- ◆ Interface definition and management.
- ◆ Supplier evaluation.
- ◆ Documentation.

Procurement

- ◆ Mainly third party manufacturing.
- ◆ Manufacturing Inspection.
- ◆ Long-term relationship.
- ◆ Own Process and product knowledge.

Construction

- ◆ Lead Engineering functions construction.
- ◆ Erection of electromechanical.
- ◆ Control of key plant construction milestones.
- ◆ Knowledge of local market and reliable construction partners.
- ◆ Other construction activities such as civil works all in house.

Commissioning

- ◆ Process knowledge and complex system interaction control.
- ◆ Detailed knowledge of plant and key technologies used.
- ◆ Start up and test runs.

Operations & Maintenance

- ◆ Spare parts stock and service.
- ◆ Short reaction time in case of plant malfunction.
- ◆ Maintenance Schedules.
- ◆ Plant Optimization.
- ◆ Operations Applies in IWP project only varies from one
- ◆ One contract to other.



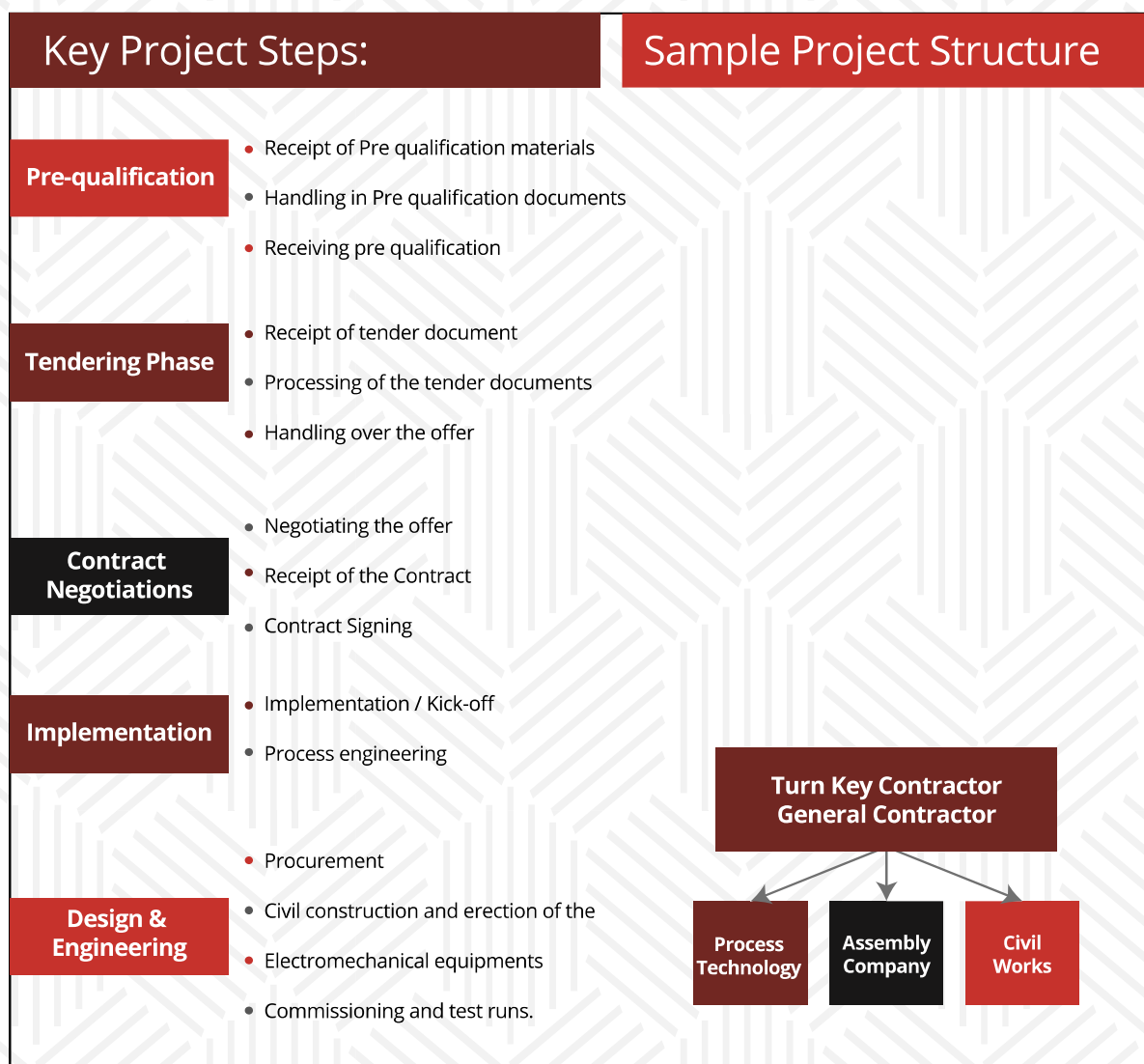
Project Management

Project Management.

Project Team:

- Experienced management team provide detailed attention throughout the project, from design review to project completion.
- Qualified Superintendents, trained in documents, project and data control processes, are assigned to project types in which they
- Specific experience and expertise.
- Proven estimating skills and systems manage costs and contracts with cross-training for all levels of employees.

Project Key Steps:



Project Management.

Project Planning, Delivery & Control: (OVERVIEW)

- Excellence in project Management is achieved through structured process that includes multiple phases:
- Initiating / Mobilization
- Planning
- Executing
- Monitoring & Controlling

The Process Balance the key project constraints and provides a tool for making decision throughout the project based on stakeholder values, performance metrics, established procedures and project goals.

Effective project management includes strategic, tactics, and tools for managing the design and construction delivery process for controlling key factors to ensure the client receives a facility that matches their expectation and functions as it is intended to function. Improvement in building quality directly contribute to reduced operational cost and increased satisfaction for all of the stakeholder. Successful projects delivery requires the implementation of management system that will control changes in the key factors of scope, schedule, budget, resources, and risk to optimize quality and therefore the investment. This section offers guidance for the entire team to successfully and effectively optimize the quality of a high performance-building project.

It is critical to established the qualities of the project that are necessary to satisfy client and end used needs and expectations, once it is delivered and in use. Value for money in construction requires completing a project on time, on budget and to a level of Functionality, which meets the determined needs. A well-programmed project will continue to provide value and meet user needs throughout its lifetime and will contribute positively to the environment in which it is located with a wide range of social economic benefits early investment in planning, programming, and design can help deliver these benefits and avoid Unnecessary costs and delays.



PROJECT MANAGEMENT

Project Management.

Factors that affect the longer-term costs of a facility, such as maintainability, useful service life and resources consumption should be integrated into the decision matrix.

- Project Delivery Teams – How to assemble and effectively manage the project team.
- Risk Management – provides details on how risk analysis is used as an organization method of identifying and measuring risk.
- Building Commissioning – provide an overview of commissioning drivers, benefits, goals, and principles for improving building Quality.

PROJECT REQUIREMENTS:

Project inception and preliminary planning require thoughtful definition of goals and needs (Project Scope); master planning to accommodate anticipated future needs; evaluation of project alternatives; identification of site requirement; funding requirement; budget authorization cycles and/or financial impacts; and project phasing, there are tools available that help define the goals and objectives for the project that let all stakeholders have a voice in making the project successful. The risk associated with making mistake in this part of the process are great, since their impact will be felt across the project development process and in the final project results.



SCOPE MANAGEMENT

Project scope is the work that must be performed to meet a client program goal for space, function-feature impact and level of quality. Scope management sets for the project and is the foundation on which the other project elements are built. From the beginning, it helps identify the work tasks and their requirements for completion. Effective scope management requires accurate definition of a client requirement in the planning and development stage and a systematic process for monitoring and managing all the factors that may affect or change the program requirements throughout the project design and construction phases through delivery of the finished project



Project Management.

COST MANAGEMENT

SCHEDULE MANAGEMENT

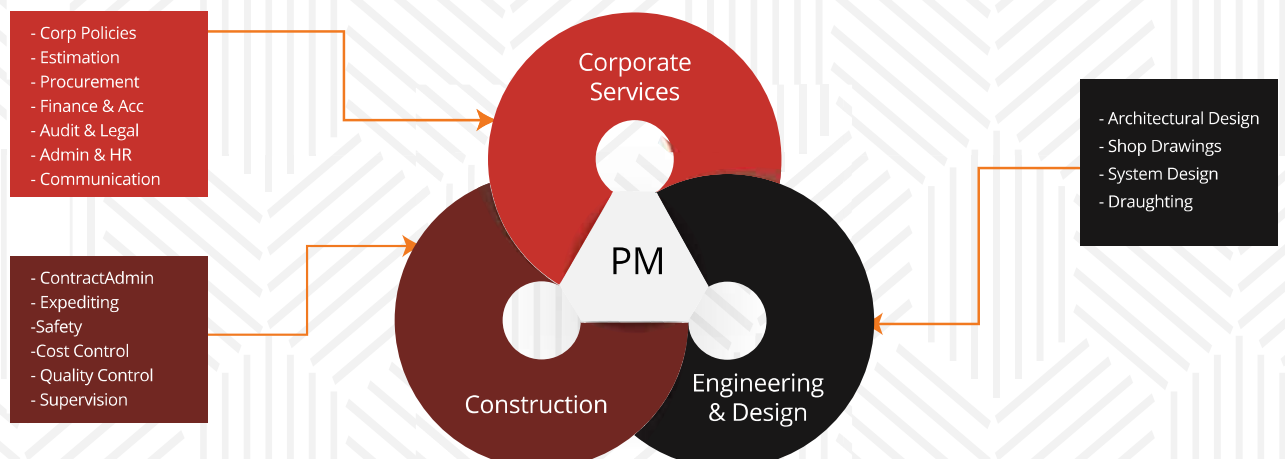
DELIVERY METHOD

PROJECT MANAGEMENT PLANS (PMP)

CONSTRUCTION STAGE MANAGEMENT

BUILDING COMMISSIONING

Operational Activities





Project Quality Plan

Project Quality Plan.

SKR Building Contracting LLC firmly believes that the systemic procedures and business processes followed by the enthusiastic staff clearly indicates care and continuance in providing highest levels of quality works, customer services and customer satisfaction. We strive to consistently provide quality engineering with the most reliable and efficient maintenance services, subject to total compliance on all the requirements, and exceeding customer expectations. SKR Building Contracting LLC focuses on training and development of its personnel through their flexibility and adaptability to service the overwhelmingly transforming business environment by innovative working techniques and continuously improving the efficacy of design and building management systems. We ensure that our staff works towards meeting the system requirements and is committed to develop processes and promote new ideas. To address and achieve an ongoing progress in quality service and customer satisfaction, SKR Building Contracting LLC maintains, reviews and revises its quality objectives and targets periodically. We conduct quality audits and reviews on all operational activities at least once a year, and allocate human, financial and other resources appropriately in order to achieve targeted results.



Project Quality Plan.

MATERIAL SUPPLIER QUALITY PLAN

PURPOSE & SCOPE

MOBILIZATION

ENGINEERING (H.O.)

PROCUREMENT & MATERIAL MANAGEMENT

PLANNING

EXECUTION

COORDINATION OF MAJOR SUB-CONTRACTORS & SPECIALISTS

QUALITY CONTROL

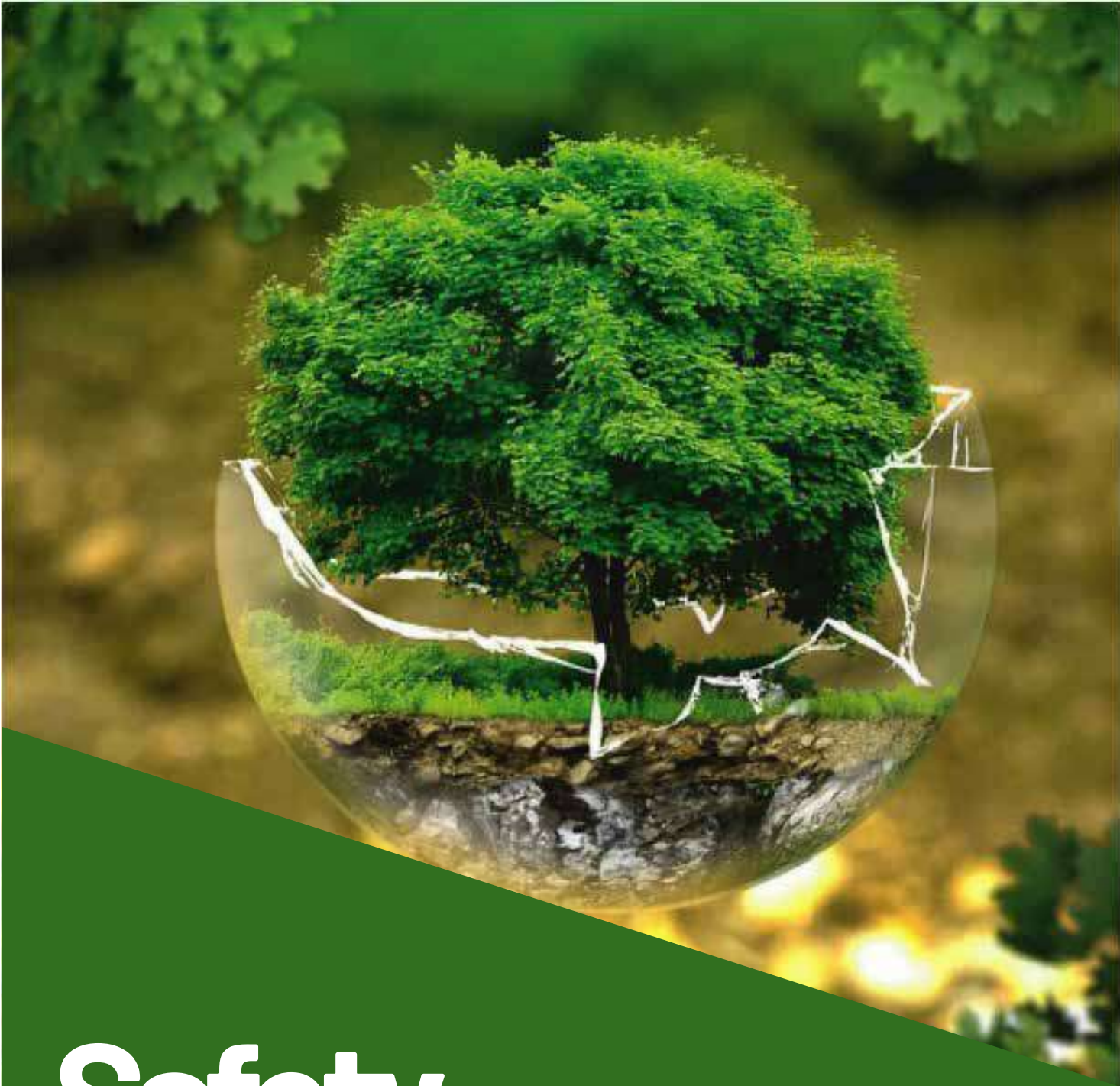
CONTRACTS ADMINISTRATION

DOCUMENT CONTROL

QUALITY ASSURANCE

WAREHOUSING





Safety Environment Policy

Safety Environment Policy.

SKR building Contracting LLC aims at preserving the environment for the future and provides support to free the planet from CFCs. We identify and manage our environmental risks and opportunities, and closely observe and work with our employees, clients, suppliers and other related organizations to upgrade our enduring operational strategy and working procedures to best practices.

SKR Building Contracting LLC prime operational target is to maximize positive environmental impact and better living conditions by minimizing wastage and use of eco-friendly products. We maintain the environment around us to be clean and safe, and regularly monitor, raise alarm and respond to any hazardous environmental situation observed. SKR Building Contracting LLC also ensures that its activities comply with the Government's Environment Policy, and it follows and maintains them in all the administrative, operational, logistics and site areas of the projects.

SKR Building Contracting LLC reaffirms that all managerial and supervisory staff are accountable for environmental performance in their area of responsibility.

- Complying with applicable environmental legislation and international standards.
- Ensuring up-to-date equipment to control emission.
- Setting clear and meaningful objectives for environmental performance, placing an emphasis on key indicators.





Health & Safety Policy

Health & Safety Policy.

SKR Building Contracting LLC establishes and maintains an ongoing procedure for identification of hazards, assessment of risks, and implementation of necessary control measures for routine and/ or abnormal activities indulging in human occupational health & safety and having access to workplace environment. The HSE Policy identifies the organization's commitment to excel and achieve a safe working environment and continually improve through setting and achieving objectives.

General Rules

- Night shift can be taken up only with adequate supervision and only after adequate lighting arrangements are made. The responsible person shall be available on-site until the work is completed and all the workmen are withdrawn from the job.
- Smoking shall not be allowed in the site premises.
- Suitable spreads (plywood, plastic sheet, etc.) shall be placed below the groove-cutting/ hole-cutting machines to contain oil spillage.
- The scrap generated from these machines shall be cleared using brushes and shall be removed on a daily basis.
- Suitable stands shall be placed at appropriate locations to ensure that the pipes being held by the machines do not topple.
- List of emergency numbers shall be displayed in the site offices near telephones.
- We are socially responsible and eco-friendly company that works towards preserving nature and environment.

SKR Building Contracting LLC ensures effective consultation and cooperation with personnel of the other organization, where both parties' works involved in the same area and either party's operations may affect either organization's employees. To ensure effective implementation of this policy, SKR Building Contracting LLC shall make adequate financial, human and other resources available with a review of the policy annually and the management systems every 6 months, carrying out audits to ensure compliance with the policy.

Our statement of general policy is to:

- Provide adequate control of health and safety risks arising from work-related activities
- Consult with our employees on matters affecting their health and safety
- Provide and maintain safe plant and equipment
- Ensure safe handling and use of substance
- Provide information, instructions and supervision for employees
- Ensure all employees are competent to do their tasks and that adequate training is given to them

Health & Safety Policy.

Safety Devices and Procedures

implementation of necessary control measures for routine and/ or abnormal activities indulging in human occupational health & safety and having access to workplace environment. The HSE Policy identifies the organization's commitment to excel and achieve a safe working environment and continually improve through setting and achieving objectives.



Barricades

Barricades warn, prevent or limit access to an area containing a temporary hazard for any personnel. Situations requiring barricades include areas below overhead work, welding, cutting, burning, hazardous leaks, spills, releases, sandblasting, asbestos removal, hydro-blasting, radiography, open trenches, ditches, holes, roadways or walkways blocked by equipment.



Protecting the Environment

All rules designed to prevent pollution must be followed. Under no circumstances should chemicals, petroleum products or other waste material be dumped on the ground or in water bodies. Precautions to prevent release of potentially harmful substances to the environment must be taken.



Work Permits

These must be obtained from appropriate-personnel of the facility being inspected-for-sensitive jobs, such as electrical work, hot work (non-electrical), confined space entry, machine excavation, explosive blasting, hydro-blasting, abrasive blasting, radiography, on-line leak repair and asbestos-related tasks.

Health & Safety Policy.

Familiarity with Work Environment

Before beginning a job, an employee should always familiarize "Integrated Management System" with safety requirement, fire protection equipment, exits and other safe operating procedures. on and offshore facility a platform occupant should be familiar with all alarm signals and locations of assigned emergency stations, life preservers and emergency equipment. An employee should never walk within 10 feet of the rear vehicle of piece of equipments unless the vehicle/equipment drivers know he is there.

Fire Prevention

The major cause of fire include electrical overloads, or malfunction, mental errors, poor housekeeping, smoking, improper welding operations, and poor equipment maintenance. Most of these causes are eliminated by using common sense, following work procedures, and maintaining good housekeeping.

The following precaution must always be observed to minimize fire hazards.

- Approved leak detectors are used when testing for leaks on natural gas connections
- Paint, inspect sprays, and paint removers are not used near an open flame because of there flammable nature.
- Oily or paint soaked rags, waste, or clothing are not left lying around the job site because of the possibility of spontaneous combustion and its resulting fire.
- Flammable liquids such as gasoline, naphtha and lacquer thinner is not used as cleaners.

Health & Safety Policy.

General Safety Rules

- Night shift works can be taken up only with adequate supervision. The responsible person shall be available at site until the work is completed and all the workmen are withdrawn from the job.
- Activities at site can be taken up in the night shift only after adequate lighting arrangements are made. The concerned supervisor is responsible to arrange this in co-ordination with the main contractor.
- Smoking shall not be allowed in the site premises.
- Suitable spreads (plywood/plastic sheet etc.) shall be placed below the groove cutting/hole cutting machines to contain the oil spillage from spoiling the floor.
- The scrap generated from these machines shall be cleared using brushes and shall be removed on a daily basis.
- Suitable stands shall be placed at appropriate locations to ensure that the pipes being held by the machines do not topple.
- List of emergency telephone numbers shall be displayed in the site office near the telephone.
- We are socially responsible and environment-oriented company which earns the confidence of our stake holders and customers.

Role and Responsibilities

Responsibility for implementation of this safety plan is given below

Administration Manager

- Monitor the implementation of this safety plan in close coordination with safety officer.
- Ensure that the concerned technical supervisors attend to safety officer's recommendation dent through his daily observation report.
- Allocate the funds and resources required for implementing the safety rules indicated in this plan.
- Chair the fortnightly meetings to review the safety performance of the site.
- Conduct safety inspection along with the site supervisor at-least once every week.

Site Safety Officer coordinator

- Assisting the Administration Manager in implementing the guidelines given in these documents.
- Inspecting the entire work site on a continuous basis.
- On-the-spot corrections of unsafe acts of the workmen and taking suitable steps to eliminate all the unsafe conditions.
- Planning the requirement of first aid, fire fighting and safety appliances well in advance.
- Organizing the inspection of scaffolding, ladders and power.
- Tools at a regular basis as per the enclosed checklists

Health & Safety Policy.

Providing induction programs for all the staff and workmen on their arrival at site and organizing refresher sessions whenever required. He will maintain record of conducting such programs.

Conducting risk assessment for critical works, (in consultation with Site Engineer) before they are taken up, to identify the possible hazards and the precautions to be taken. This will be done on a regular basis based on the planning schedule.

Engineers/Supervisors/Foreman

- Understanding the safety plan fully and following the same in their day-to-day activities.
- Giving safety instructions to their workmen as a part of the job instructions, highlighting the possible hazards in that day's work and the precautions to be take.
- Keeping their work area neat and clean. Especially at heights free from loose materials.
- Preventing horseplay of workmen.
- Sending all new employees to safety officer before employing them to provide them to safety induction.
- Rectifying the unsafe conditions pointed out by the Safety officer.

Training Plan

- All employees will go through a safety induction program before their deployment at site.
- A responsible person on site will give this and records will be maintained to this effect.

Subjects to be covered during the induction sessions will be :-

- Importance of pre-estimation and the need to be aware of space restrictions.
- Safety rule and particular reference to pedestrian safety in crowded traffic areas.
- Work procedure and the precautions to be taken before taking up such works.
- Scaffolding approval tag system.
- Mobile scaffolding : hand rail/toe board/full planking/height/movement.
- Specification of staff and ladders :
 - General safety rule to be followed.
- Safety appliances to be used with reference to various activities.
- Ladders usage - Do's and don'ts.
- Power tool

Health & Safety Policy.

- Fire prevention
- Emergency preparedness.
- What to do in case of accident.
- Daily work instruction given by the supervisors will include the hazards likely to be encountered and the precautions to be taken.
- The induction will be extended to sub-contractor employees also.

Accident Reporting

- All accidents and near miss incidents at site will be recorded in the first aid register.
- All accidents, including the near misses and first aid cases will be investigated.
- All serious accidents will be reported to the police and the scene of accident will be preserved until the police investigations are completed.
- If the injured person likely to be away from duty for more to Head Office. But the report shall reach all the above within 24 hours of the occurrence of accident. The Safety coordinator shall investigate all such accidents in co-ordination with the Administration Manager.
- A suitable follow-up report shall be sent to all the above regarding the status of the injured at a later stage after getting necessary information from the doctors.

Safety Appliances

- All workmen will be required to use coveralls while entering the site.
- Color coding for safety helmets : Staff and visitors will be provided with grey helmets and the technicians will use white helmets.
- Safety goggles or face shields will be provided to all the employees who are required to do drilling, grinding, chipping, polishing and any other works where flying object hazard exist.
- Welders will be provided with welding shields with dark glass of suitable shade, leather hand gloves and flame cutters will be provided to them wherever required.
- Cotton gloves will be provided to all employees who are likely to handle materials with sharp objects.
- Earplugs will be provided to workmen who are employed in or near noisy operations.
- Safety belts will be provided all workmen who are likely to fall down more than 3-M height from their place of work.
- Dust masks and safety goggles will be provided to all the workmen who are required to carry out work involving generation of dust.

Health & Safety Policy.

Checklist for Safety Appliances

SAFETY APPLIANCES	APPLICATION
HARD HAT / SAFETY HELMET	All including visitors
SAFETY SHOES	All Employees
SAFETY GOGGLES / FACE SHIELDS	Grilling, Grinding, Chipping
WELDING	
GLOVES - COTTON	Material Handlers
GLOVES - LATEX	Insulation applicators
WELDING SHIELDS	welders
GLOVES-LEATHER	Welders
APRONS	Welders
SAFETY BELTS	As required-to all employees

Scaffoldings

Hazards:

- Collapse of Scaffold
- Fall of persons and / or materials from the

Precautions:

- Main contractor provided all the fixed and mobile scaffolding as may be required by us.
- Height of the mobile scaffolding will be restricted to 3.5 times its minimum base width
- Working platform of all the scaffoldings will be fully planked and provided with suitable hand rail and toe board.
- All workmen in the platform will be asked to get down before moving the scaffold.
- It will be ensured that the wheel locks are engaged properly before the workmen start using the same.
- No workmen will be allowed to go up the scaffolding without a safety belt in his possession.

Health & Safety Policy.

Portable Power Tools:

Hazards:

- Electric Shock.
- Hit by rotating objects.
- Foreign body falling into the eye.

Precautions:

All portable power tools will be checked at site before releasing it to the site use. It will be inspected by the same person every month to ensure that it continues to be safe to use.

- If a power tool is found to be unsafe to use during the regular inspection, it shall be
- marked / tagged to that effect and returned to stores for repair or replacement.
- Power cable provided to the tools will not have any joint and the cable will be laid in such a way that it does not present any trip hazard.
- All power cables will be provided with appropriate plug and socket for power distribution.
- The guards provided in the power tools shall not be removed either by the technicians or by the maintenance electrician.
- The power tools shall either be returned to the stores at the end of the shift every day or shall be stored properly at site to prevent its damage.
- Power tools shall not be operated in wet conditions and they shall not be exposed to water.

Welding and Flame cuttings

Hazards:

- Hot burns
- Foreign body falling in the eye
- Arc eye
- Electric shock
- Fire
- Fall of cylinders

Health & Safety Policy.

Arc Welding

- It is the responsibility of the welder and his crew to comply with all the safety requirements given here. If they find any difficulty in
- complying with any of the requirements, they will have to report it to the supervisor concerned and await further instructions from him. The supervisor has to arrive at an alternate method of complying with the said requirement.
- The welding machine should be provided with body earthing.
- The welding cable shall be laid in such a way not to cause any tripping there is any, it should be provided with insulated male and female couplers to ensure a safe connection. The return path for the welding circuit shall preferably from the job itself.
- The welding holder should have proper insulation and if the insulation is broken during usage, the holder shall be replaced immediately.
- Before the welding work is started, it should be ensured that there is no flammable materials stored or installed nearby. If there is any, it should be either removed or covered with fire resistant cloth.
- The welding flux shall be contained in the same floor; it shall not be allowed to fall to the next lower level.
- A fire extinguisher shall kept at the place of welding. A fire watcher shall be posted, if required.
- The welder should use a welding shield, apron, gloves in addition to safety shoes, helmets, coverall etc.
- It is the responsibility of the welding crew to ensure that there is no trace of hot flux or any smoldering fire caused by it at the place of work before leaving the place.

Flame Cutting

- Oxygen and acetylene cylinders will not be taken inside any confined spaces.
- Acetylene cylinder will be kept upright always and will be tied somewhere to ensure that it does not topple down during use. It will be provided with flash back arrestors during use.
- Cylinder key will always be kept in the cylinder for any emergencies.
- The regulators will be inspected by the supervisor concerned to ensure that there is no leakage and it functions properly. Leaky or malfunctioning regulators will be removed from service immediately.
- The hoses will be laid in such a way not to pose any trip hazard.
- The gas cutters will be required to use gloves and goggles.
- Before the work is started, it should be ensured that there is no flammable materials stored or installed nearby. If there is any, it should be either removed or covered with fire resistant cloth.
- The hot flux shall be contained in the same floor; it shall not allowed to fall to the next lower level.



Tools & Equipments

Tools & Equipments.

CIVIL EQUIPMENTS LIST.		
1	Tower Crane	5
2	Passenger Hoist	3
3	Generator 500 KVA	3
4	Generator 50 KVA	1
5	Formwork Scaffolding	5000 M2
6	Showel	1
7	Bobcat	2
8	Forklift	2
9	Mixer	1
10	Air Compressor	1
11	Bus	2
12	Pickup	2



Tower Crane

Tools & Equipments.



BobCat

Tools & Equipments.



Fork Lift



Passenger Hoist

Tools & Equipments.



Boom Loader



Power Float

Tools & Equipments.



Civil Machinaries / Operations



AIR COMPRESSOR



BAR BENDING MACHINE



BOBCAT



Bar Bending Machine



FORK LIFT



GENSET



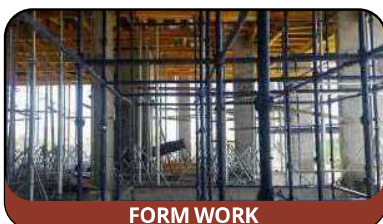
WELDING MACHINE



DRILLING MACHINE



PILLING



FORM WORK



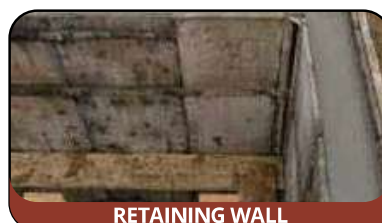
RAFT FOUNDATION



WP



PT SLAB



RETAINING WALL





Work Gallery

Work Gallery





Complete Projects

Complete Projects



**Project :- Proposed G+3, Australian International School
Plot NO :- 6734107**

Location:- Al Barsha , South Third, Dubai - UAE

Client :-Abdul Rahman Mohamed Nasir Allowais

Consultant :- National Engineering Bureau Architectural & Engineering Consultant

Complete Projects



Project :- Proposed (B+G+1F+Roof) Private Villa

Plot No:- 357-0485

Location: Al-Safa Second-Dubai-UAE

Client: Dr. Suliman Ali Jabran

Consultant: M/s. Federal Engineering Consultants & Project Management

Complete Projects



**Project :- Proposed (G+4P+18 Typical+ Roof) Commercial and Residential Building,
Plot No:- JVC13AHRG001B
Location: Jumairah Village Community, Dubai-UAE
Client: M/s. AC Domus Limited
Consultant: M/s. AL Khawaja Engineering Consultants**

Complete Projects



**Project :- Proposed (G+3P+16 Typical+ Roof) Commercial and Residential Building,
Plot No:- JVC17TCP002C**

Location: Jumairah Village Community, Dubai-UAE

Client: MR.Qusai Mohammad Ahmad Alghussein

Consultant: M/s. AL Khawaja Engineering Consultants



Running Projects

Running Projects



Project :- Proposed 2B+G+3P+9 Typical Floor + Gym Commercial / Residential Building

Plot NO :- JVC 15BMRM004

Location:- Al Barsha , South Fourth - 681, Dubai - UAE

Client :- Mr Mohammad Haroon Abdul Habib

Consultant :- Chawla Architectural & Consulting Engineers

Running Projects



Project:-Proposed 1B+G+4 Storey+Roof (Commercial/Residential Building)

Plot No:- JVC10XMRA006

Location:- AL Barsha South

Dubai - UAE

Client:- Linkage Limited

Consultant:- Chawla Architectural & Consulting Engineers

Running Projects



Project:-Proposed 1B+G+1P+4 Storey+Roof (Commercial/Residential Building)

Plot No:- JVC11YMRA003

Location:- AL Barsha South

Dubai - UAE

Client:- Mr. Waseem Haider Ghulam Haider

Consultant:- Chawla Architectural & Consulting Engineers

Running Projects



Project:-Proposed G+2 Town House Residential Building Typical 14 Villas)

Plot No:- JVC14RFP001

Location:- AL Barsha South

Dubai - UAE

Client:- Mr. Mohammad Haroon Abdul Habib

Consultant:- Paradise Home Engineering Consultancy

Running Projects



Project:-Proposed G+2 Town House Residential Building Typical 12 Villas)

Plot No:- JVC10IFRP003

Location:- AL Barsha South

Dubai - UAE

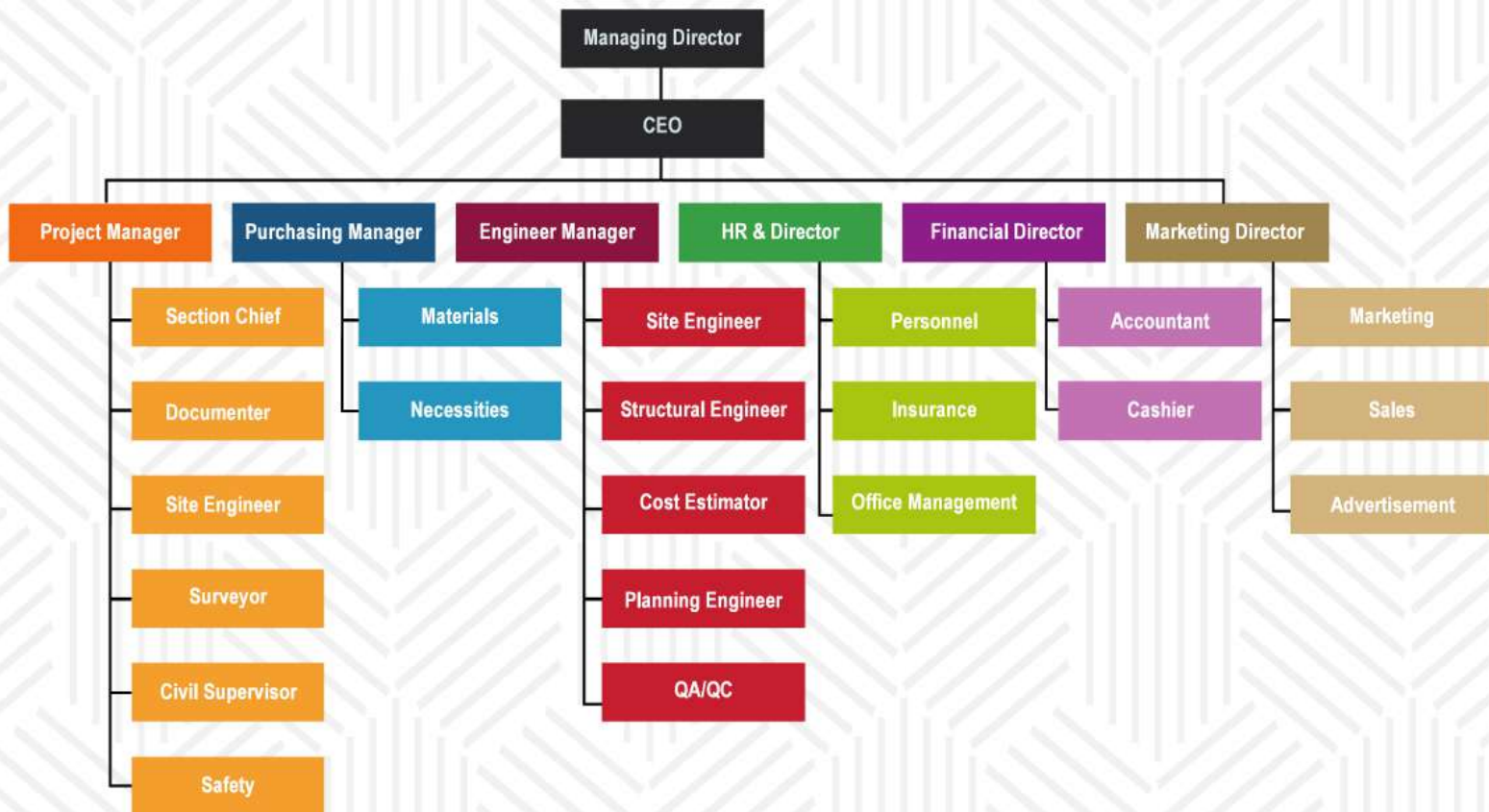
Client:- Mr. Mohammad Haroon Abdul Habib

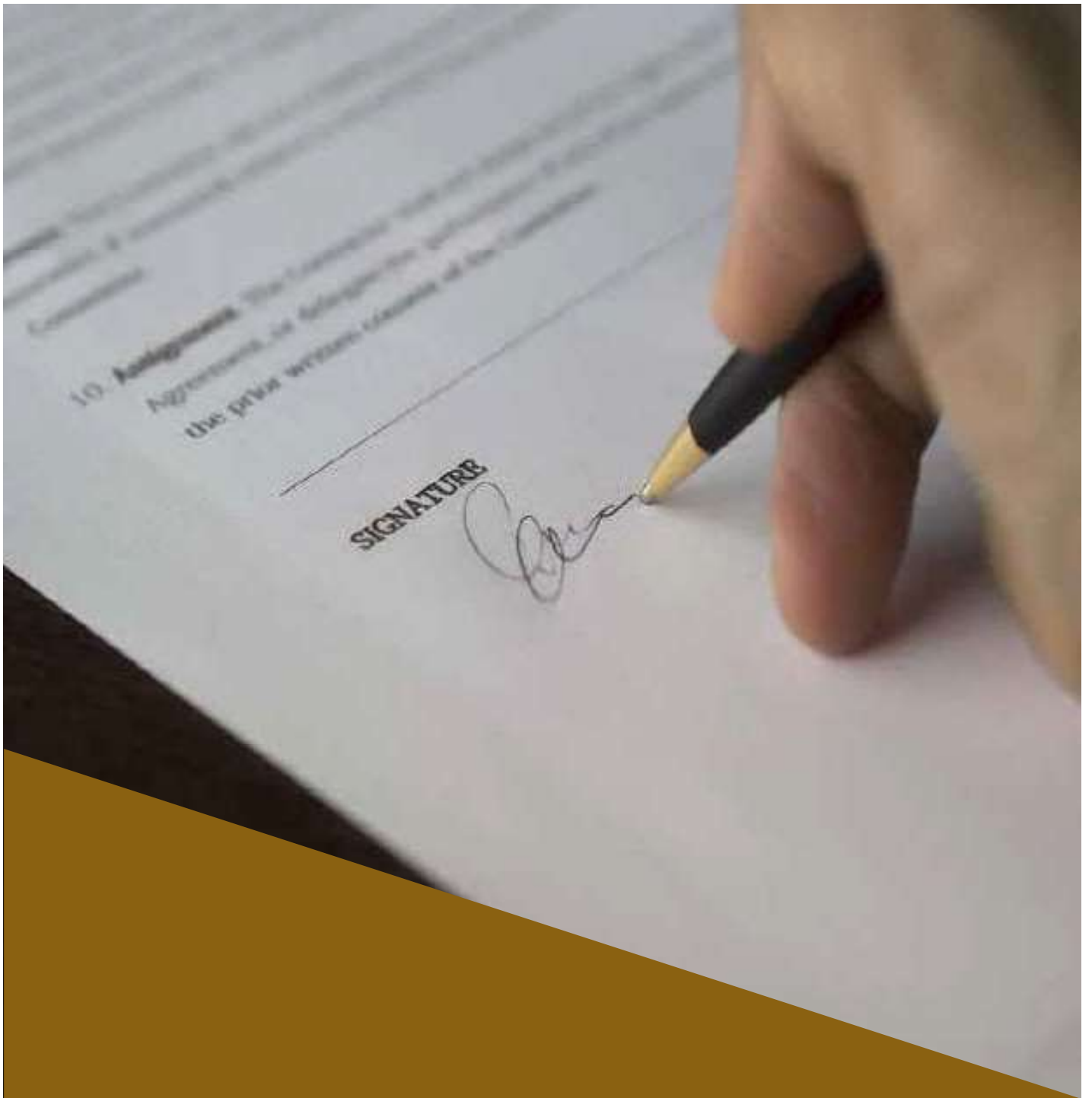
Consultant:- Paradise Home Engineering Consultancy



Organization Chart

ORGANIZATION CHART





Trade License

رخصة تجارية Commercial License

تفاصيل الرخصة / License Details

License No.	778276	رقم الرخصة
Company Name	S K R BUILDING CONTRACTING L.L.C	اسم الشركة
Trade Name	S K R BUILDING CONTRACTING L.L.C	الإسم التجاري
Legal Type	Limited Liability Company(LLC)	الشكل القانوني
Expiry Date	14/03/2022	تاريخ الإنتهاء
D&B D-U-N-S ®	0	الرقم العالمي
Register No.	1275511	رقم السجل التجاري
Issue Date	15/03/2017	تاريخ الإصدار
Main License No.	778276	رقم الرخصة الام
DCCI No.	286214	عضوية الغرفة

الاطراف / License Members

Share / الحصة	Role / الصفة	Nationality / الجنسية	Name / الإسم	No./رقم الشخص
	Manager / مدير	India / الهند	شاهنواز رضوى خان محمد اخيار حسين خان SHAHNAWAZ RIZVI KHAN MOHAMMAD AKHYAR HUSSAIN KHAN	612283

نشاط الرخصة التجارية / License Activities

Building Contracting

مقاولات البناء

العنوان / Address

Phone No	تليفون	P.O. Box	صندوق بريد
Fax No	فاكس	Parcel ID	رقم القطعة
Mobile No	هاتف متحرك		مكتب رقم 401 ملك امين محمد الشريف - المرقبات

البريد الإلكتروني / Email

الملاحظات / Remarks

مقاولات بناء أرضي + 12

Print Date 29/03/2021 11:47 تاريخ الطباعة

Receipt No.

0

رقم الإيصال



يمكنك الآن تجديد رخصتك التجارية من خلال الرسائل النصية القصيرة، أرسل رقم الرخصة إلى 6969 (دو/اتصالات) للحصول على إذن الدفع.
Now you can renew your trade license by sending a text message (SMS). Send your trade license number to 6969 (Du/ Etisalat) to receive payment voucher.

Get FREE access to Zoho One for the first year
احصل على زوهو ون مجاناً للسنة الأولى



Zoho.com/ded

وثيقة إلكترونية معتمدة وصادرة بدون توقيع من دائرة التنمية الاقتصادية. لمراجعة صحة البيانات الواردة في الرخصة برجاء زيارة الموقع www.dubaided.gov.ae
Approved electronic document issued without signature by the Department of Economic Development. To verify the license kindly visit www.dubaided.gov.ae



MOL

FEDERAL AUTHORITY FOR IDENTITY & CITIZENSHIP
GENERAL DIRECTORATE OF RESIDENCY AND FOREIGNERS AFFAIRS - DUBAI

الهيئة الاتحادية للهوية والجنسية
الإدارة العامة للإقامة وشؤون الأجانب - دبي

Name: S K R BUILDING CONTRACTING L.L.C

Al Rigga DUBA :
052-4018211 :
2022-03-30 :

Partner FARAH DEEBA SAGHIR
Partner AHMAD KHAN
Partner FARAJ KHAMIS FARAJ
Partner RABEE SALEEM
Partner SHAHNAWAZ RIZVI
Partner KHAN MOHAMMAD
Partner AKHYAR HUSSAIN KHAN

MOL
2/1/296467

701801046

United Arab Emirates

هذه البطاقة ملك للإدارة العامة للإقامة وشؤون الأجانب - دبي واستخدامها يخضع للأحكام والشروط.

على حامل هذه البطاقة إبرازها للجهات المعنية عند الطلب.

يجب إبلاغ جهة الإصدار في حالة فقدان البطاقة.

يرجى من يعثر على هذه البطاقة إعادتها إلى أقرب مركز شرطة.

- This card belongs to General Directorate of Residency and foreigners affairs – Dubai and the use is subject to terms and conditions.
- The holder of this card presents it to concerned authorities upon request.
- Issuers must be notified in case of card loss.
- If found please return to the nearest police station.

خدمة أمر - هاتف: ٨٠٠ ٥١١١ ص.ب: ٤٣٣٣ دبي - إ.ع.م.
Tel.: 800 5111 Amer Service P.O.Box: 4333 Dubai - U.A.E.
Website: www.dnrd.ae



Sister Concerns

رخصة تجارية Commercial License

تفاصيل الرخصة / License Details

License No.	825715	رقم الرخصة	
Company Name	S R K TECHNICAL SERVICES L.L.C	اسم الشركة	
Trade Name	S R K TECHNICAL SERVICES L.L.C	الإسم التجاري	
Legal Type	Limited Liability Company(LLC)	الشكل القانوني	
Expiry Date	06/02/2022 تاريخ الإنتهاء	Issue Date	07/02/2019 تاريخ الإصدار
D&B D-U-N-S @	0 الرقم العالمي	Main License No.	825715 رقم الرخصة الام
Register No.	1391264 رقم السجل التجاري	DCCI No.	315894 عضوية الغرفة

الاطراف / License Members

Share / الحصص	Role / الصفة	Nationality / الجنسية	Name / الإسم	No./ الشخص
	Manager / مدير	India / الهند	شاهنواز رضوى خان محمد اخيار حسين خان SHAHNAWAZ RIZVI KHAN MOHAMMAD AKHYAR HUSSAIN KHAN	612283

نشاط الرخصة التجارية / License Activities

Carpentry & Flooring Contracting	اعمال النجارة وتركيب الارضيات
Floor and wall Tiling Works	اعمال تخطيط الارضيات والحوائط
False Ceiling & Light Partitions Installation	تركيب الأسقف المعلقة و القواطع الخفيفة
Plaster Works	اعمال البلاستر
Building Cleaning Services	خدمات تنظيف المباني والمسكن
Wall Paper Fixing	تركيب ورق الجدران
Plumbing & Sanitary Contracting	اعمال التمديدات والتركيبات الصحية
Electromechanical Equipment Installation and Maintenance	اعمال تركيب المعدات الكهروميكانيكية وصيانتها
Engraving & Ornamentation Works	اعمال النقش والزخرفة
Electrical Fitting Contracting	اعمال التمديدات الكهربائية
Insulation Contracting	تركيب المواد العازلة في الأبنية والمنشآت المدنية
Painting Contracting	اعمال الاصباغ والدهانات
Air-Conditioning, Ventilations & Air Filtration Systems Installation & Maintenance	تركيب انظمة التكييف والتهوية وتنقية الهواء وصيانتها

Print Date 03/02/2021 17:48 تاريخ الطباعة Receipt No. 13806969 رقم الإيصال



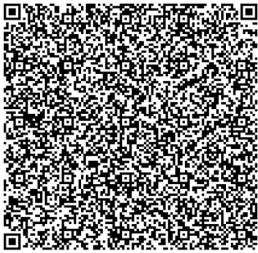
يمكنك الآن تجديد رخصتك التجارية من خلال الرسائل النصية القصيرة، أرسل رقم الرخصة إلى 6969 (دو/اتصالات) للحصول على إذن الدفع.
Now you can renew your trade license by sending a text message (SMS). Send your trade license number to 6969 (Du/ Etisalat) to receive payment voucher.

Get FREE access to Zoho One for the first year
احصل على زوهو ون مجاناً للسنة الأولى



Zoho.com/ded

وثيقة إلكترونية معتمدة وصادرة بدون توقيع من دائرة التنمية الاقتصادية. لمراجعة صحة البيانات الواردة في الرخصة يرجى زيارة الموقع www.dubaied.gov.ae
Approved electronic document issued without signature by the Department of Economic Development. To verify the license kindly visit www.dubaied.gov.ae



Trade License / رخصة تجارية

Regular License - رخصة عادية

License No. **69007** رقم الرخصة



ACCI No. **77004** رقم الغرفة

Register No. **68336** رقم السجل التجاري

License Details	Renew License / تجديد رخصة	تفاصيل الرخصة
Trade Name STAR SQUARE BUILDING CONT/L.L.C		الاسم التجاري ستل سكوير لمقاولات البناء/ذ.م.م
Legal Form Limited Liability Company		الشكل القانوني شركة ذات مسؤولية محدودة
Expire Date 2022-08-07 تاريخ الانتهاء		Issue Date 2014-08-03 تاريخ الاصدار

Passport / رقم الجواز	Nationality / الجنسية	Manager Name / اسم المدير
Z2153085	الهند India	نمير احمد خان NOMAIR AHMAD KHAN AKHIYAR HUSSAIN KHAN

Activites	الانشطة
All Kind Building Projects Contracting	مقاولات مشاريع المباني بانواعها
Electromechanical Equipment Installation & Maintenance	أعمال تركيب المعدات الكهروميكانيكية وصيانتها
Electrical Construction	المقاولات الكهربائية
Mechanical Construction	المقاولات الميكانيكية

صندوق البريد P.O. Box	تاريخ انتهاء عقد الايجار Contract Expiry Date	اسم المؤجر / Lessor	العنوان / Address
23580	2022-04-14	SAIED EBRAHIMIAN KHOUZANI	شقة رقم 1, العامة Kind of Structure Flat-Apartment No. 1, Aamra

ملاحظات

Emp No. رقم الموظف	Voucher Date. 2021-09-16 تاريخ الايصال	Voucher No. 30170101 رقم الايصال
--------------------	--	----------------------------------

Print Date **2021-09-16** تاريخ الطباعة



P.O.Box 183458, Dubai, United Arab Emirates
T: +971 4 2866014 | F: +971 4 2999477
info@skrbcont.com, www.skrbcont.com